

Velasmooth™



Cellulite is a phenomenon which occurs primarily in women but sometimes in men as well. Uneven tension within the hypodermal layer of fat creates an uneven skin surface and dimpling. Hypertrophied adipocytes, trapped lymph and poor circulation all contribute to the cellulite phenomenon.

How does Velasmooth™ work?

Vacuum suction and massage from the mechanical rollers draw circulation into the local area for increased oxygen availability, as well as manipulation of the tissue for drainage of trapped fluids through the lymphatic system. Heat from the infrared light source and the bi-polar RF is deployed into the hypodermis to facilitate the use of energy from adipocytes in this layer.

Use of these stored triglycerides results in the shrinkage of the actual fat cell and reduces the total volume within the fat chamber. Focal aggressive treatment to specific lipodystrophic areas such as "love handles" and "saddlebags" results in contouring of the area.

There is often visible and measurable contouring of the lumps and bumps as evidenced by post-treatment photos, girth measurements, and what most patients love the most... how their favorite pair of jeans seem to fit much better! Men seem to respond very well to VelaSmooth™ treatments for contouring of torso and abdominal areas.

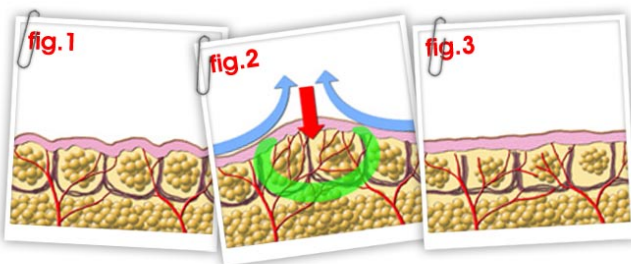


Fig.1
Fat clusters in the hypo-dermis become distended while beyond rigid connective tissue = dimpling.

Fig.2
VelaSmooth™ affects hypodermis by ELOS heating, rollers and suction.

Fig.3
Reduced fat clusters results in smoother skin surface.

How many treatments are needed?

Most patients achieve noticeable changes in contouring and skin tightening after 10 sessions, and first start seeing a difference after the first 5-6 treatment sessions. Treatments are performed twice weekly. Some patients with more severe cellulite or lipodystrophy would benefit from continuing the twice weekly protocol for up to 16 sessions. Maintenance treatments are done quarterly. Average length of treatment is an hour. There is some pinkness to the skin and the areas feel warm for a short while after a completed treatment session. Normal activities are resumed the next day. Some patients may experience bruising in the treated areas, especially if they are prone to bruising easily.



The recommended program is: Sign up all for 12 treatment sessions. For those who achieve a satisfactory result by 8-10 sessions, they can apply the remaining sessions toward the maintenance program.

TELEPHONE: 0844 800 9631
www.celllife.co.uk